

# Warm-up Exercises

Four-Mallets: Scholastic

B. Ross  
based from K. Wylie Simple Steps

Warm-up #1

Musical notation for Warm-up #1, a single staff with a treble clef. It consists of a series of chords, each with four notes, played in a sequence across the staff.

Warm-up #3

Musical notation for Warm-up #3, consisting of ten numbered exercises (1-10) arranged in two columns. Each exercise is on a single staff with a treble clef and includes a specific fingering pattern below the notes. The exercises are:

- 1- 2 3 2 3
- 2- 1 4 1 4
- 3- 1 3 1 3
- 4- 2 4 2 4
- 5- 1 3 2 4
- 6- 2 3 1 4
- 7- 3 2 4 1
- 8- 4 2 3 1
- 9- 2 3 1 4
- 10- 1 3 2 4

Warm-up #4 ( Inside Mallets Only )

Musical notation for Warm-up #4, consisting of two staves with a treble clef. The notation includes complex rhythmic patterns, including sixteenth notes and rests, designed for inside mallets only.

Warm-up Exercises  
Four Mallets, pg 2

Warm-up #5

Two staves of music in treble clef. The first staff begins with a melodic line of eighth notes, followed by a series of chords. The second staff continues the melodic line and chordal accompaniment.

Warm-up #6 ( Inside Mallets Only )

Three staves of music, labeled A, B, and C, in treble clef. Each staff contains a melodic line with eighth notes and rests, designed for inside mallets.

Warm-up #7

Four staves of music, labeled I, II, III, and IV, in treble clef. Each staff contains a melodic line with eighth notes and rests, designed for four mallets.

Warm-up Exercises  
Four Mallets, pg 3

Warm-up #8

Two staves of music. The first staff begins with a treble clef and a key signature of one sharp (F#). The music consists of eighth and sixteenth notes with various dynamics including accents (>) and slurs. The second staff continues the pattern with similar rhythmic and dynamic markings.

Warm-up #9

Two staves of music labeled A and B. Both staves feature complex rhythmic patterns with many beamed notes, primarily eighth and sixteenth notes. The notation includes dynamic markings such as accents (>) and slurs.

Warm-up #10 (I - IV - V<sup>7</sup> - I)

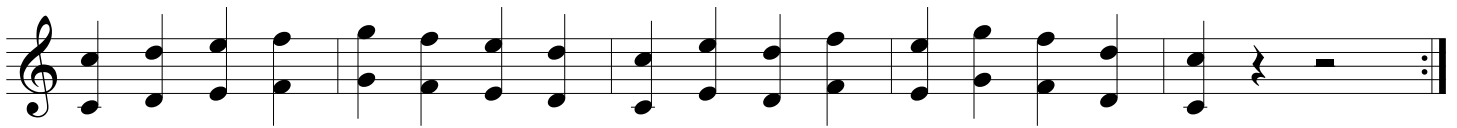
Two staves of music. The first staff shows a sequence of chords with rhythmic patterns above them, including accents (>) and slurs. The second staff continues with similar chordal and rhythmic structures, ending with a final chord and a fermata.

Warm-up #11

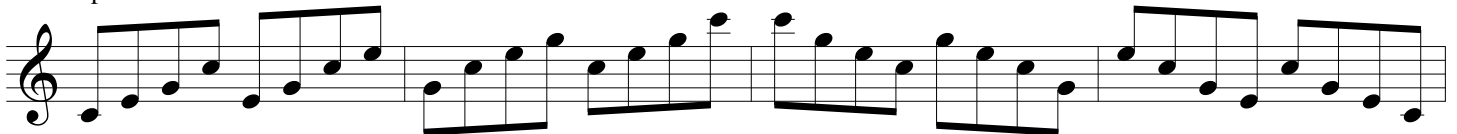
Two staves of music. The first staff includes rhythmic patterns with fingerings indicated by numbers 1-4 below the notes. Fingerings shown are 4 2 3 2, 3 1 3 2, and 3 2 4 2. The second staff continues with similar rhythmic and fingering patterns, ending with a fermata.

Warm-up Exercises  
Four Mallets, pg 4

Warm-up #12



Warm-up #13



( 1 - 2 - 3 - 4 )

( 4 - 3 - 2 - 1 )



( Inside Mallets Only )

( Opt. 2: One Handed )

( Opt. 3: Double in 8va )

Warm-up #14 ( Inside Mallets Only )

